



Movement Rules for Esquimalt Harbour

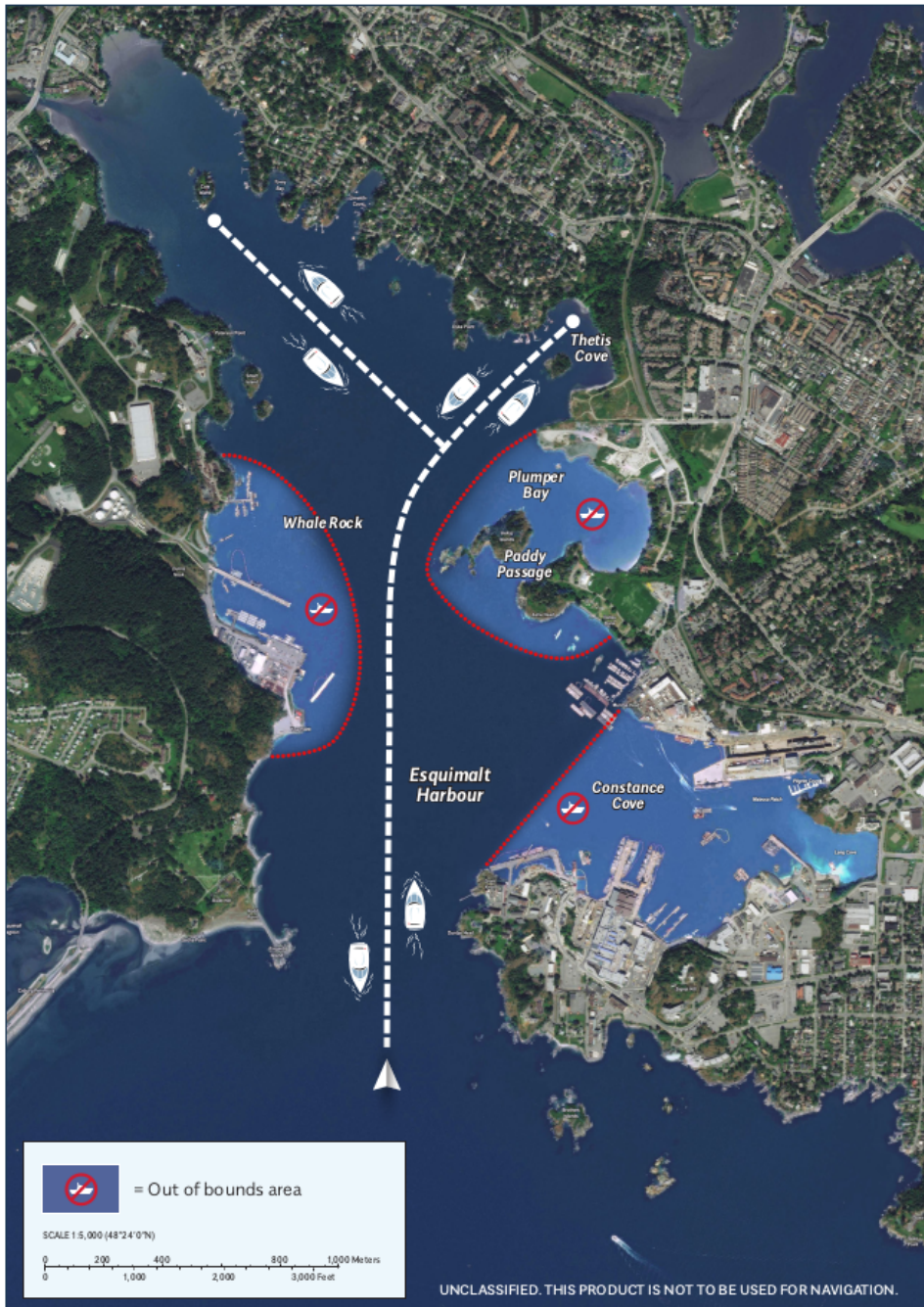
Good day,

I am reaching out on behalf of CFB Esquimalt requesting your assistance with helping us educate visitors to the Esquimalt Harbour. Attached is a graphic that shows a map of the harbour with movement rules.

We are sending this to you as we are finding a lot of people are unaware of the rules regarding the movements within the harbour, which is a safety concern. We are asking for your cooperation with sharing this graphic as it will ensure everyone has a safe visit in the harbour while protecting the various ongoing work including diving operations, construction, and other military operations.

If you have any questions or concerns please feel free to reach out to us.

Thank you,
CFB Esquimalt



VISITING ESQUIMALT HARBOUR?

Follow these
4 simple steps
for a safe and
responsible
visit:

1

Call in!

Esquimalt Harbour is a controlled access area. All visitors must contact the Queen's Harbour Master prior to entering, moving within or departing the harbour. Use VHF Channel 10 or 250-363-2160 on your phone.

2

Stay in your lane!

Take a look at the harbour map and familiarize yourself with traffic lanes and areas not open to visitors.

3

Go slow!

Maintain a safe speed of no more than 5 knots with minimum wake at all times.

4

Give space!

Remember to stay at least 200m from vessels underway.